

GRAPHTEC

Extensive lineup adapted to a wide variety of applications

Instrument Product Line-up

midi LOGGER
HV GL2000



midi LOGGER
GL980



midi LOGGER
GL240



DATA PLATFORM
GL7000



midi LOGGER
GL840 Series



PetitLOGGER
GL100 Series



www.graphteccorp.com

Data Logger

Isolated input, multi-channel logger midi LOGGER GL840 series

High withstand voltage model
GL840-WV

Multi-input model
GL840-M

WLAN ^{*1}

GS sensor

GL100
up to 5 units
as remote sensor

Max. 10ms sampling

Σ type A/D converter

Temp. Humidity, Voltage, Pulse/Logic

Up to 200 channels

LAN USB SDCard

- Multifunction analog inputs
 - Voltage 20 mV to 100 V, 1-5V
 - Temp. TC: R, S, B, K, E, T, J, N, W (WRe5-26)
 - RTD: Pt100, Pt1000 (IEC750), JPt100 (JIS)
 - Humidity 0 to 100% (the B-530 option is required)
- Pulse/Logic inputs
 - Pulse 4ch (Accumulating, Instant, or Rotation) ^{*2}
 - Logic 4ch ^{*2}
- Flexible input system for wide array of applications
- WLAN (option) capable for remote monitoring
- Maximum sampling rate up to 10 ms ^{*3}
- Extended memory capacity using SD memory card
- Combining GL100 and GL840 by using WLAN

10 channel handy logger midi LOGGER GL240

WLAN ^{*1}

GS sensor

GL100
1 unit
as remote sensor

Max. 10ms sampling

Σ type A/D converter

Temp. Humidity, Voltage, Pulse/Logic

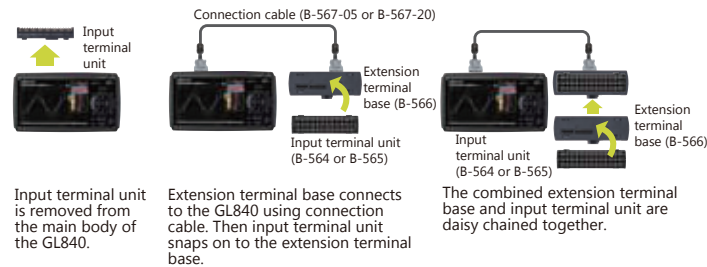
10 channels

USB SDCard

- Multifunction analog inputs
 - Voltage 20 mV to 100 V, 1-5V
 - Temp. TC: R, S, B, K, E, T, J, N, W (WRe5-26)
 - Humidity 0 to 100% (the B-530 option is required)
- Pulse/Logic inputs
 - Pulse 4ch (Accumulating, Instant, or Rotation) ^{*2}
 - Logic 4ch ^{*2}
- Multifunction input in 10 isolated channels
- Maximum sampling rate up to 10 ms ^{*3}
- Extended memory capacity using SD memory card
- WLAN (option) capable for remote monitoring
- Combining GL100 and GL240 by using WLAN

*1: WLAN is available in limited regions. *2: Select either Pulse or Logic input, and use the optional input/output cable (B-513). *3: Sampling rate is limited by the number of channels to be used.

Expandable up to 200 channels in GL840



- Support the GS sensors in GL840
- Temperature, acceleration, and others are able to measure using the GL sensors.

Combining GL100-WL and GL240/GL840

GL100-WL can now be connected to the GL240 or GL840 as a remote sensor.



PetitLOGGER GL100 series

- Supports a wide array measurement by exchanging the sensors
- Wireless connection to the PC/Smart devices via WLAN
- Power source : Battery (AA x 2) or USB bus power

WLAN ^{*4}

GS sensor

GS sensor

GL100-WL (with wireless LAN)

GL100-N (without wireless LAN)

Wireless LAN GL100-WL

USB Interface

microSD memory card

Sensor, input terminal, adapter 7types

PC

Smart device GL100-WL

*4: WLAN is available in limited regions.

GS sensors

The sensor is connected to the GS sensor port of the GL840 and GL100.

Sensors			
<p>Temp./Humidity</p> <p>GS-TH</p> <p>Temp.: -20 to 85°C</p> <p>Humidity: 0 to 100% RH</p> <p>Dew-point temp., Accumulated temp.</p>	<p>Acceleration/Temp.</p> <p>GS-3AT</p> <p>3-axis: max. 10 G</p> <p>Temp.: -10 to 50°C</p>	<p>Carbon dioxide (CO₂)</p> <p>GS-CO₂</p> <p>CO₂ concentration: 0 to 9999 ppm</p>	<p>Illuminance/UV</p> <p>GS-LXUV</p> <p>Illuminance: 0 to 200 klx</p> <p>UV intensity: 0 to 30 mW/cm²</p> <p>Accumulated Illuminance and UV</p>
Dual port adapter		Input terminal / Adapter	
<p>Dual port adapter</p> <p>GS-DPA</p> <p>Connects two sensors of GS-TH, GS-CO₂, GS-LXUV.</p>	<p>Thermistor terminal</p> <p>GS-4TSR</p> <p>4ch Temp.: -40 to 120°C</p> <p>It varies by the sensor.</p> <p>Logic or Pulse</p>	<p>Current sensor adapter</p> <p>GS-DPA-AC</p> <p>50, 100, 200 A</p> <p>Max. Single-phase, three-phase power system</p>	<p>Voltage/Temp. terminal</p> <p>GS-4VT</p> <p>4ch Voltage: max. 50 V</p> <p>Temp.: TC, K or T</p> <p>Logic or Pulse</p>
<p>Extension cable</p> <p>Extension cable for input module</p> <p>GS-EXC</p> <p>Cable length: 1.5 m</p>	<p>Thermistor sensor</p> <p>Normal type</p> <p>GS-103AT-4P</p> <p>It varies by the sensor.</p> <p>Ultrathin type</p> <p>GS-103JT-4P</p>	<p>AC current sensor</p> <p>50 A 100 A 200 A</p>	

Data Logger / Data Acquisition

High-speed, High-Voltage, Isolated 4 channel Data Logger

midi LOGGER **HV** GL2000



Simultaneous sampling Isolated	CAT III	Max. 1MS/s (1μs)
Voltage Temp., Humidity, Pulse/Logic	Built-in RAM 4MS/ch	Built-in Flash memory 4GB
USB SDcard		

■ Multifunction analog inputs

Voltage 20 mV to 1000 V DC, 1-5 V DC
10 mV to 1000 V rms
*Maxim Measurable Voltage 600V

Temp. TC: K, J, E, T, R, S, B, N, W (WR5-26)

Humidity 0 to 100% (the B-530 option is required)

■ Pulse/Logic inputs

Pulse 4 channels (*5)
Accumulating, instant or RPM

Logic 4 channels (*5)

- 4ch High Speed Simultaneous Sampling
- CAT III 600V Compatible
- Measure AC 600 V Measurement with True-rms
- Built-in High-capacity RAM (4 M samples/ch) and Flash memory (4 GB)
- Large Easy-to-read 7-inch LCD

*5: Select either Pulse input or Logic input, and use the optional input/output cable for GL (B-513 option).

Isolated, simultaneous 8 channel Data Logger

midi LOGGER **GL980**



Simultaneous sampling Isolated	Max. 1MS/s (1μs)	Voltage Temp., Humidity, Pulse/Logic
Built-in RAM 4MS/ch	Built-in Flash memory 4GB	USB SDcard

■ Multifunction analog inputs

Voltage 20 mV to 500 V DC, 1-5 V DC,
10 mV to 250 V rms

Temp. TC: K, J, E, T, R, S, B, N, W (WR5-26)

Humidity 0 to 100% (the B-530 option is required)

■ Pulse/Logic inputs

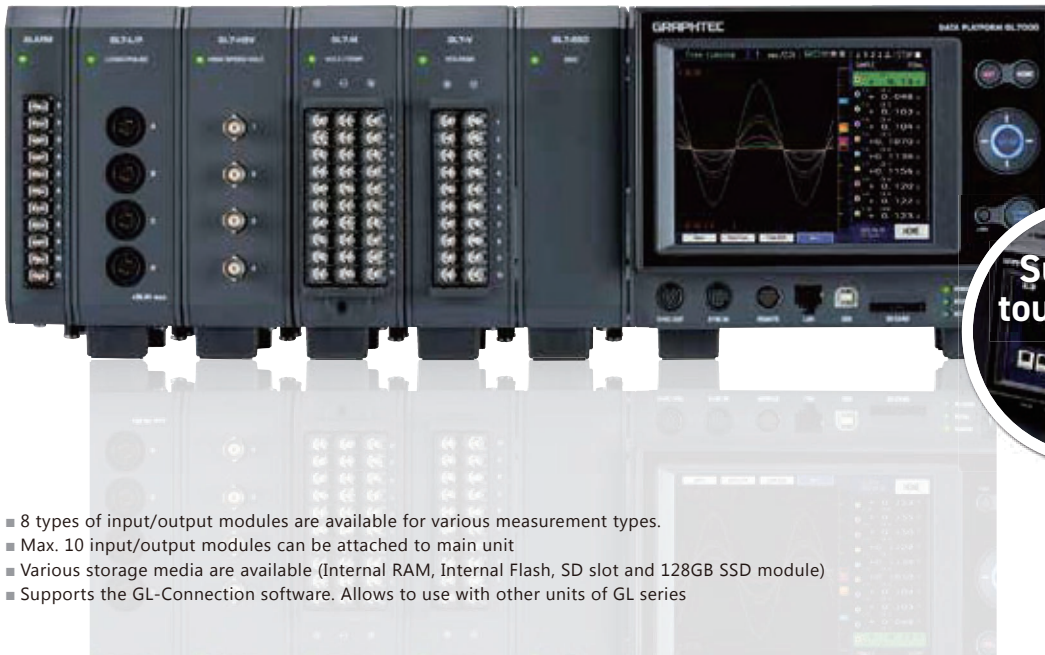
Pulse 4 channels (*5)
Accumulating, instant or RPM

Logic 4 channels (*5)

- 8ch High speed simultaneous sampling
- Includes 500 V measurement with 16-bit A/D converter
- Equipped with true-rms measurement
- Large built-in RAM (4 M samples/ch) and built-in Flash memory (4 GB)
- Large easy-to-read 7-inch LCD

Modular Type Data Acquisition Unit DATA PLATFORM **GL7000**

Hi-speed 1MS/s	Multi-channels max.112ch	High voltage 1000 V	Huge memory capacity 128GB SSD
-------------------	-----------------------------	------------------------	-----------------------------------



- 8 types of input/output modules are available for various measurement types.
- Max. 10 input/output modules can be attached to main unit
- Various storage media are available (Internal RAM, Internal Flash, SD slot and 128GB SSD module)
- Supports the GL-Connection software. Allows to use with other units of GL series

* Example, the option of 6 modules and the display are installed.

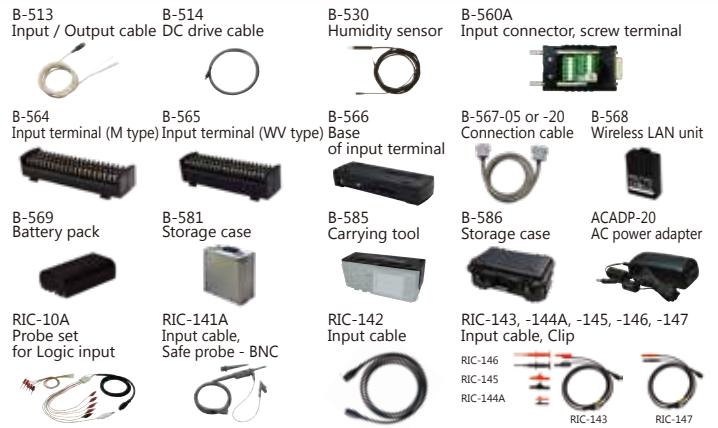
Voltage Module Voltage 10ch/unit Max. 1kS/s (1ms) Simultaneous sampling Isolated GL7-V	Voltage/Temperature Module Voltage, Temp. 10ch/unit Max. 100S/s (10ms) A/D converter type Isolated GL7-M	High speed Voltage Module High speed 4ch/unit Max. 1MS/s (1μs) Simultaneous sampling Isolated GL7-HSV	High Voltage Module Voltage 2ch/unit Max. input voltage 1000V Max. 1MS/s (1μs) Isolated GL7-HV	DC Strain Gauge Module Strain, Voltage 4ch/unit Strain gauge, Sensor Max. 100kS/s (10μs) Isolated GL7-DCB
Charge (Acceleration) Module Charge, Voltage 4ch/unit Charge, IEPE Sensor (TEDS) Max. 100kS/s (10μs) Isolated GL7-CHA	Voltage Output Module Output voltage 8ch/unit Max. 100kS/s (10μs) Captured data, Arbitrary waveform GL7-DCO	Logic/Pulse Module Logic/Pulse 16ch/unit Max. 1MS/s (1μs) Simultaneous sampling GL7-L/P	SSD Module 128 GB storage GL7-SSD	Display Module GL7-DISP

* Optional input or output cable is required.

*Probe set for Logic input: RIC-10A (Option)

Options and Accessories

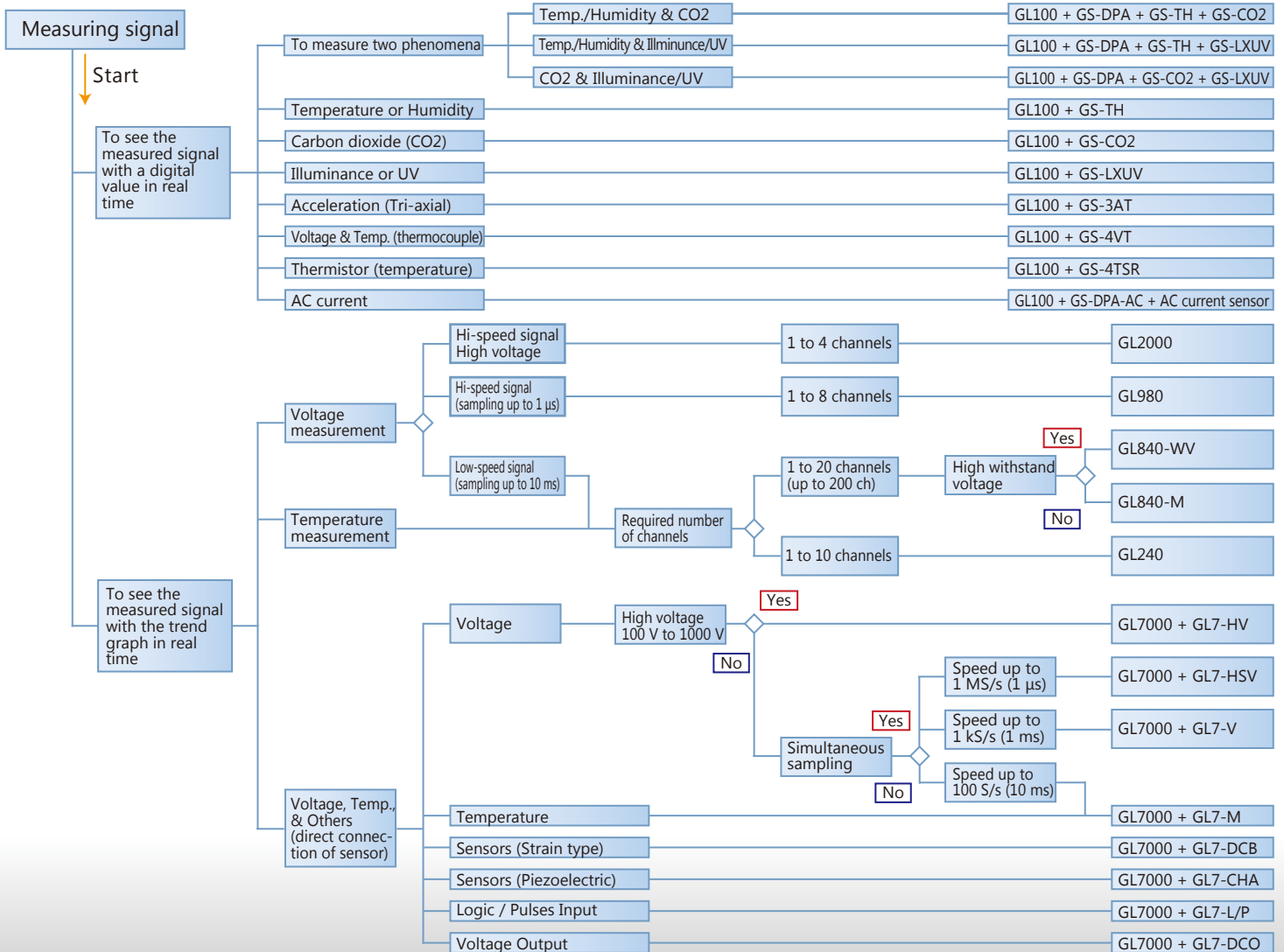
Model	Item	GL240	GL840 series	GL2000/980	GL7000 series
B-513	Input/Output cable for GL series	✓	✓	✓	✓
B-514	DC drive cable	✓	✓	✓	✓
B-530	Humidity sensor	✓	✓	✓	✓
B-560A	Input connector, screw terminal				✓
B-564	Input terminal (M type)		✓		✓
B-565	Input terminal (WV type)		✓		✓
B-566	Base of input terminal		✓		✓
B-567-05,-20	Connection cable		✓		✓
B-568	Wireless LAN unit		✓		✓
B-569	Battery pack	✓	✓	✓	✓
B-581	Storage case	✓	✓	✓	✓
B-585	Carrying tool (GL7000 + 3 modules)		✓		✓
B-586	Storage case (GL7000 + 3 modules)		✓		✓
ACADP-20	AC power adapter	✓	✓		
RIC-10A	Probe set for Logic input				✓
RIC-141A	Input cable, Safe probe - BNC			✓	✓
RIC-142	Input cable, BNC - BNC			✓	✓
RIC-143	Input cable, Banana - BNC			✓	✓
RIC-144A	Clip, Alligator (small size) for RIC-143,147			✓	✓
RIC-145	Clip, Alligator (middle size) for RIC-143,147			✓	✓
RIC-146	Clip, Grabber for RIC-143,147			✓	✓
RIC-147	Input cable, Banana - BNC (High voltage)			✓	✓



Product selection guide

There are a wide variety of measurement as faster signal in the vehicle and equipment test, or slower signal like the temperature in the environment test. The device to capture the signal needs to be selected to fit the required application.

* Please refer to the inside page of this document for details on each product.



- Due to the possibility of equipment or PC failure, the data files on the instrument will not be guaranteed to be held on the memory. Please make a backup of data whenever possible to avoid data loss.
- Brand names and product names listed in this brochure are the trademarks or registered trademarks of their respective owners.
- Items mentioned are subject to change without notice. For more information about product, please check the web site or contact your local representative.

⚠ For using equipment in correctly and safely • Before using it, please read the user manual and then please use it properly in accordance with the description.
• To avoid malfunction or an electric shock by current leakage or voltage, please ensure a ground connection and use according to the specification.

GRAPHTEC
Graphtec Corporation

503-10 Shinano-cho, Totsuka-ku, Yokohama 244-8503, Japan
Tel : +81-45-825-6250 Fax : +81-45-825-6396

Website <http://www.graphteccorp.com>



ALL-instrument_KE10565_7P